

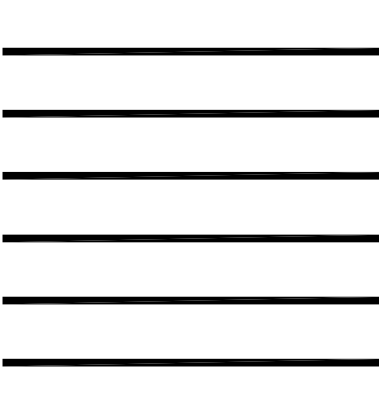
MPA ARCHITECTS, INC.
ARCHITECTS
PLANNERS
INTERIOR DESIGNERS

1801 CENTREPARK DR. E.
SUITE 175
WEST PALM BEACH
FL 33401

TEL (561) 683-7000
FAX (561) 478-3922

FL LIC AA-C000630

SEAL



CLASSROOM ADDITIONS TO
SANDPIPER SHORES
ELEMENTARY SCHOOL
SDPBC PROJECT #1961-9405
FLORIDA
PALM BEACH COUNTY

Scale: 1"=30'
Date: 07/28/04
Design By: EDF
Drawn By: EAD
Check By: EDF

FILE NUMBER
0407

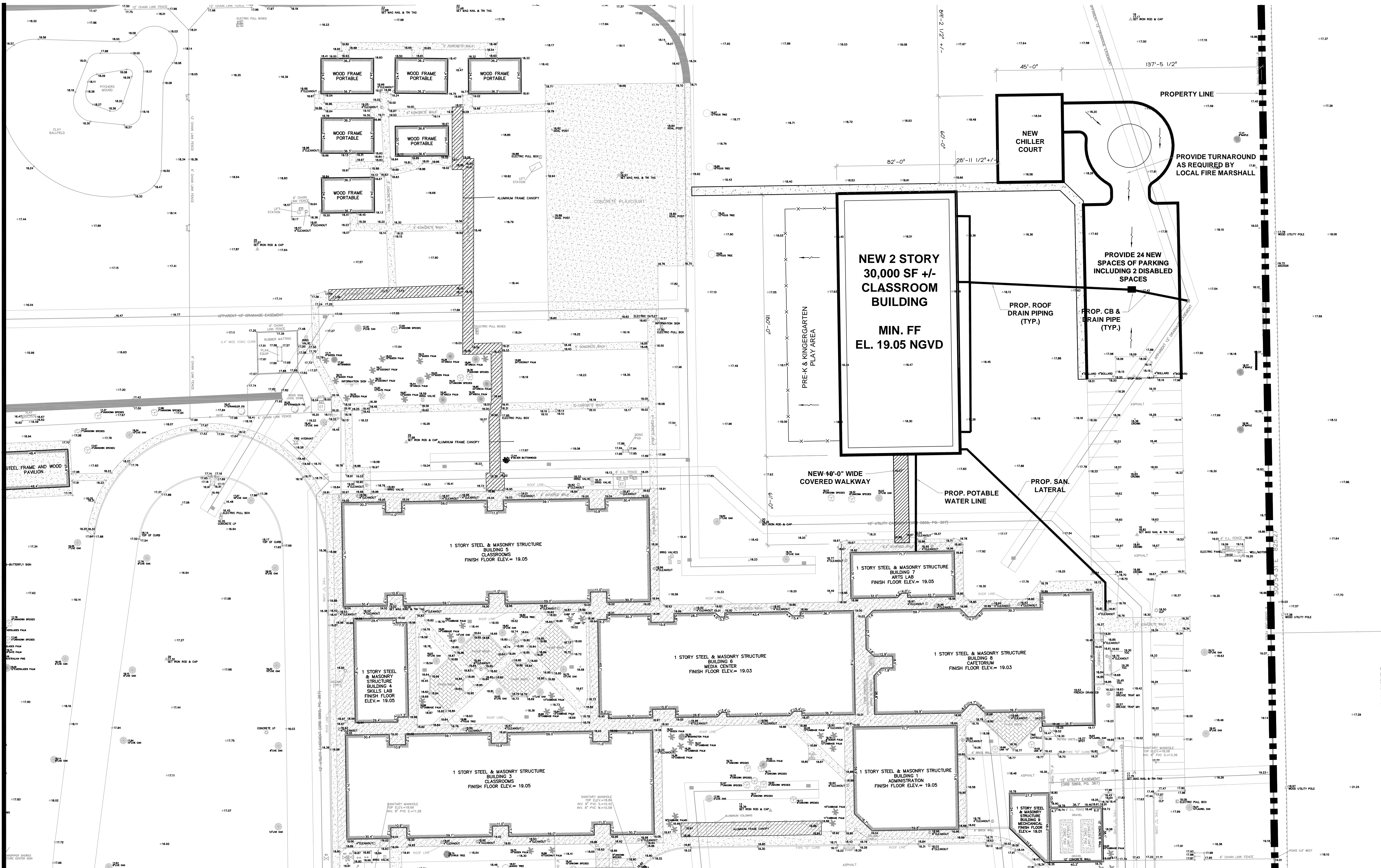
REVISIONS

CONCEPTUAL
CIVIL
PLAN

SHEET

C-1

OF ___ OF ___

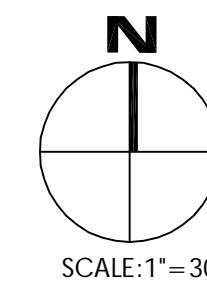


CIVIL CONSTRUCTION LEGEND

- OVERLAND FLOW LINES
- PROPOSED CATCH BASIN
- PROPOSED MANHOLE
- EXISTING CATCH BASIN
- EXISTING MANHOLE
- PROPOSED UTILITY LINE
- PROPOSED CLEANOUT

GENERAL NOTES:

- THE LOCATIONS AND SIZES OF EXISTING UTILITY LINES DEPICTED HEREON ARE APPROXIMATE ONLY; THE EXACT LOCATIONS SHALL BE DETERMINED BY THE CONTRACTOR PRIOR TO CONSTRUCTION. IN ADDITION, THE CONTRACTOR SHALL BE RESPONSIBLE TO VERIFY IF "OTHER" UTILITIES (NOT SHOWN ON THE PLANS) EXIST WITHIN THE AREA OF CONSTRUCTION. SHOULD THERE BE UTILITY CONFLICTS, THE CONTRACTOR SHALL INFORM THE ENGINEER, NOTIFY THE RESPECTIVE UTILITY OWNERS AND PROVIDE WRITTEN SOLUTIONS FOR REVIEW TO RESOLVE UTILITY CONFLICTS AND/OR UTILITY ADJUSTMENTS, AS REQUIRED.
- NEW DRAINAGE PIPING MATERIAL SHALL BE RCP UNLESS NOTED OTHERWISE.
- ON-SITE CIVIL ELEMENTS TO COMPLY WITH CURRENT EDITION OF THE SDPBC "CIVIL ENGINEERING DESIGN HANDBOOK".
- THE CONTRACTOR SHALL SECURE NECESSARY PERMITS FROM JURISDICTIONAL AGENCIES SUCH AS, SFWMD, FDEP, LWDD, FIRE MARSHAL, PBCWUD AND PBC HEALTH DEPARTMENT.
- MODIFICATIONS TO SURFACE WATER MANAGEMENT SYSTEM SHALL COMPLY WITH SFWMD CRITERIA. THE MINIMUM SITE GRADING CRITERIA IS PROVIDED HERewith. THE DATA IS PROVIDED FOR INFORMATIONAL PURPOSES ONLY. IT IS NOT INTENDED TO SUPERCEED DRAINAGE PERMIT REQUIREMENTS OR ESTABLISHED BASIN CRITERIA:
>MINIMUM FF ELEV. 19.05 NGVD
>MINIMUM PLAY COURT ELEV. 17.00 NGVD
- THE CONTRACTOR SHALL BE RESPONSIBLE TO COORDINATE THE PROPOSED IMPROVEMENTS WITH EASEMENT HOLDERS SO AS TO MITIGATE OR RESOLVE POTENTIAL CONFLICTS.



PREPARED BY:

DCI DIFONTE CONSULTING, INC.
WELLINGTON, FLORIDA 33414
TEL. & FAX.: (561) 792-7551
WWW.DIFONTE.COM
CERT. OF AUTHORIZATION NO. 8432

NOT FOR CONSTRUCTION